

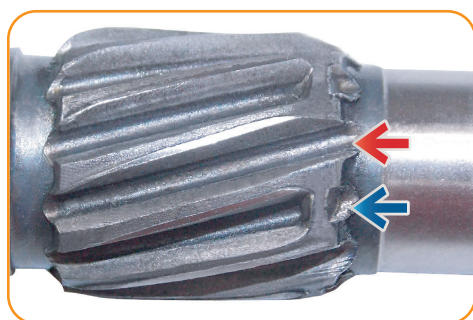
INFORMATIVE 03

TIPS ZEN S.A.

STARTER DRIVE REPLACEMENT WITH STOP SPLINE SYSTEM

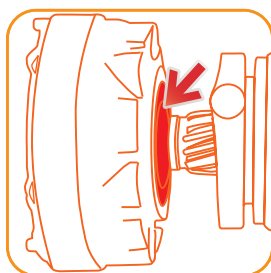
In this tip we will show **STARTER DRIVE REPLACEMENT WITH STOP SPLINE SYSTEM**, in just a few steps:

REPLACING IMPELLER WITH SYSTEM STOP SPLINE



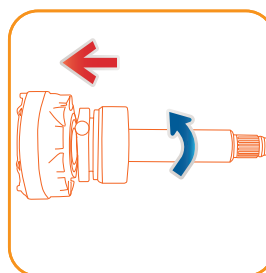
In any starter motor that has the **stop spline** system, the stop which limits the starter drive advancement is on the armature or planetary shaft. This system consists of a **passing spline** and the other **blocked**.

THE PROCEDURE TO REPLACE THE STARTER DRIVE FOR MOTORS WITH THIS SYSTEM MUST FOLLOW THE FOLLOWING STEPS:



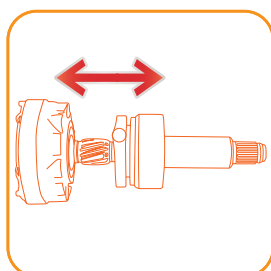
1ST STEP

Remove the **ring/limit** washer.



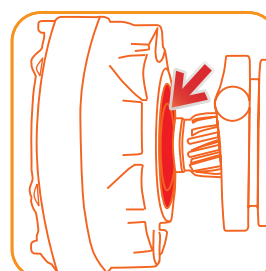
2RD STEP

Move the starter drive in the **direction** of the planetary bearing and make a small turn to change the drive spline with the armature/planetary shaft's free spline.



3ST STEP

Replace the failed starter drive with a new **ZEN** starter drive and repeat the 2nd step in order to lock the splines.



4TH STEP

Replace the ring/limit washer. Make sure that the starter drive doesn't come out of the armature or planetary shaft splines and reassemble the starter motor.